



# M390D

## TECHNICAL DATA SHEET

# M390D TOWER CRANE

TYPICAL LOADS	
LOAD	RADIUS
3.0T	71.7m
7.9T	50.0m
16.0T	32.6m
32.0T	18.6m

**MAXIMUM ALLOWABLE SERVICE WIND  
SPEED OF 20 m/s**



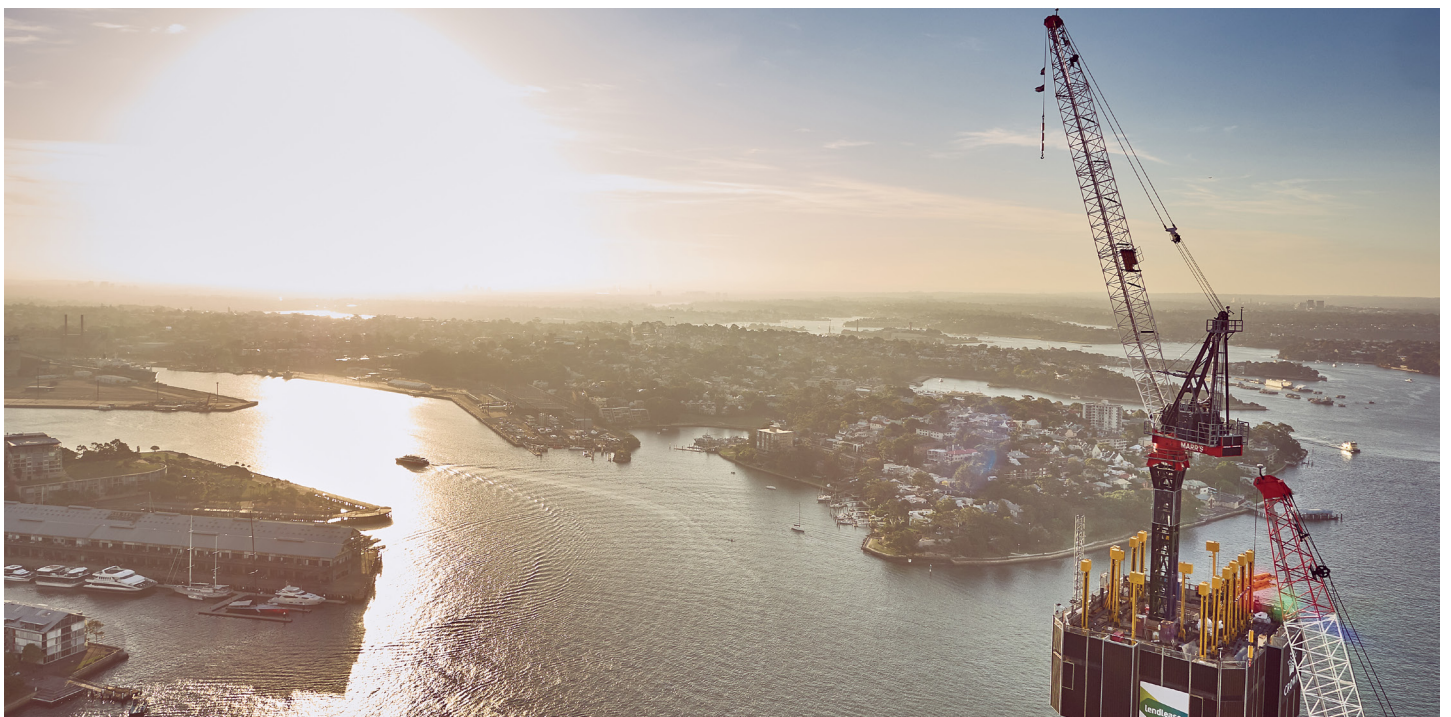
COMPATIBLE WITH  
**100% RENEWABLE  
DIESEL (HVO100)**



# M390D RADIUS & CAPACITY 16T WINCH (METRIC UNITS)

Boom Length (m)	Max Rad. for Max WLL (m)	Min Rad. (m)	WLL at Min Rad. (T)	1 FALL																				Max Rad. (m)	WLL at Max Rad. (T)
				Radius (metres) & Capacity (tonnes)																					
				7.5	10.0	15.0	20.0	25.0	30.0	35.0	40.0	42.5	45.0	47.5	50.0	52.5	55.0	57.5	60.0	62.5	65.0	67.5	70.0		
73.4	-	6.4	15.0	15.0	14.9	14.0	12.5	11.3	10.2	9.3	8.5	8.1	7.5	6.8	6.2	5.7	5.2	4.8	4.4	4.0	3.7	3.4	3.1	71.7	3.0
68.8	17.9	6.1	16.0	16.0	16.0	16.0	15.3	13.9	12.8	11.5	9.4	8.6	7.9	7.2	6.6	6.0	5.6	5.1	4.7	4.4	4.0	-	-	67.2	3.8
64.2	28.2	5.7	16.0	16.0	16.0	16.0	16.0	16.0	14.8	12.0	9.9	9.1	8.3	7.7	7.1	6.5	6.0	5.6	5.2	4.9	-	-	-	62.8	4.8
59.6	28.9	5.3	16.0	16.0	16.0	16.0	16.0	16.0	15.2	12.4	10.3	9.5	8.7	8.0	7.4	6.9	6.4	6.0	-	-	-	-	-	58.3	5.9
55.0	29.6	5.0	16.0	16.0	16.0	16.0	16.0	16.0	15.7	12.9	10.8	10.0	9.2	8.5	7.9	7.4	-	-	-	-	-	-	-	53.9	7.1
50.4	30.3	4.7	16.0	16.0	16.0	16.0	16.0	16.0	16.0	13.3	11.2	10.4	9.6	8.9	-	-	-	-	-	-	-	-	-	49.4	8.5
45.8	31.1	4.3	16.0	16.0	16.0	16.0	16.0	16.0	16.0	13.8	11.7	10.8	10.1	-	-	-	-	-	-	-	-	-	-	45.0	10.1
41.2	31.8	4.0	16.0	16.0	16.0	16.0	16.0	16.0	16.0	14.2	12.1	-	-	-	-	-	-	-	-	-	-	-	-	40.5	11.9
36.6	32.6	3.7	16.0	16.0	16.0	16.0	16.0	16.0	16.0	14.7	-	-	-	-	-	-	-	-	-	-	-	-	-	36.1	14.2
32.0	31.7	3.4	16.0	16.0	16.0	16.0	16.0	16.0	16.0	-	-	-	-	-	-	-	-	-	-	-	-	-	-	31.7	16.0

Boom Length (m)	Max Rad. for Max WLL (m)	Min Rad. (m)	WLL at Min Rad. (T)	2 FALL																				Max Rad. (m)	WLL at Max Rad. (T)
				Radius (metres) & Capacity (tonnes)																					
				7.5	10.0	15.0	20.0	25.0	30.0	35.0	40.0	42.5	45.0	47.5	50.0	52.5	55.0	57.5	60.0	62.5	65.0	67.5	70.0		
73.4	-	6.3	15.0	15.0	14.9	14.0	12.5	11.3	10.2	9.3	8.5	7.9	7.1	6.4	5.8	5.2	4.7	4.3	3.8	3.5	3.1	2.8	2.6	71.5	2.5
68.8	-	6.0	23.5	22.4	21.1	19.3	17.2	15.6	14.2	11.4	9.2	8.3	7.5	6.8	6.2	5.6	5.1	4.7	4.3	3.9	3.6	-	-	67.1	3.4
64.2	-	5.7	27.2	26.7	25.6	23.4	21.1	18.9	14.9	12.0	9.8	8.9	8.1	7.4	6.7	6.2	5.7	5.2	4.8	-	-	-	-	62.6	4.5
59.6	8.4	5.3	32.0	32.0	31.1	28.3	25.7	19.5	15.4	12.4	10.2	9.3	8.5	7.8	7.2	6.6	6.1	5.7	-	-	-	-	-	58.2	5.6
55.0	17.0	5.0	32.0	32.0	32.0	26.4	20.1	16.0	13.0	10.8	9.9	9.1	8.4	7.7	7.2	-	-	-	-	-	-	-	-	53.8	7.0
50.4	17.3	4.7	32.0	32.0	32.0	27.0	20.7	16.5	13.5	11.2	10.3	9.5	8.8	-	-	-	-	-	-	-	-	-	-	49.2	8.4
45.8	17.6	4.4	32.0	32.0	32.0	27.7	21.3	17.0	14.0	11.8	10.9	-	-	-	-	-	-	-	-	-	-	-	-	44.9	10.2
41.2	17.9	4.1	32.0	32.0	32.0	28.3	21.8	17.5	14.5	12.2	-	-	-	-	-	-	-	-	-	-	-	-	-	40.4	12.1
36.6	18.2	3.7	32.0	32.0	32.0	28.9	22.3	18.1	15.0	-	-	-	-	-	-	-	-	-	-	-	-	-	-	36.0	14.6
32.0	18.6	3.4	32.0	32.0	32.0	29.5	22.9	18.6	-	-	-	-	-	-	-	-	-	-	-	-	-	-	-	31.5	17.7



Due to continuing product development Favelle Favco reserves the right to alter specifications of its products as appropriate.

# M390D RADIUS & CAPACITY 25T WINCH (METRIC UNITS)

Boom Length (m)	Max Rad. for Max WLL (m)	Min Rad. (m)	WLL at Min Rad. (T)	1 FALL																				Max Rad. (m)	WLL at Max Rad. (T)
				Radius (metres) & Capacity (tonnes)																					
				7.5	10.0	15.0	20.0	25.0	30.0	35.0	40.0	42.5	45.0	47.5	50.0	52.5	55.0	57.5	60.0	62.5	65.0	67.5	70.0		
73.4	-	6.7	15.0	15.0	14.9	14.0	12.5	11.3	10.2	9.3	8.5	7.9	7.1	6.4	5.8	5.2	4.7	4.3	3.8	3.5	3.1	2.8	2.6	72.0	2.4
68.8	-	6.4	23.5	22.4	21.1	19.3	17.2	15.6	14.2	11.4	9.2	8.3	7.5	6.8	6.2	5.6	5.1	4.7	4.3	3.9	3.6	3.3	-	67.5	3.3
64.2	11.5	6.0	25.0	25.0	25.0	23.4	21.1	18.9	14.9	12.0	9.8	8.9	8.1	7.4	6.7	6.2	5.7	5.2	4.8	4.5	-	-	-	63.1	4.4
59.6	20.5	5.6	25.0	25.0	25.0	25.0	25.0	19.5	15.4	12.4	10.2	9.3	8.5	7.8	7.2	6.6	6.1	5.7	-	-	-	-	-	58.6	5.5
55.0	20.9	5.3	25.0	25.0	25.0	25.0	25.0	20.1	16.0	13.0	10.8	9.9	9.1	8.4	7.7	7.2	-	-	-	-	-	-	-	54.2	6.9
50.4	21.3	4.7	25.0	25.0	25.0	25.0	25.0	20.7	16.5	13.5	11.2	10.3	9.5	8.8	-	-	-	-	-	-	-	-	-	49.7	8.3
45.8	21.8	4.6	25.0	25.0	25.0	25.0	25.0	21.3	17.0	14.0	11.8	10.9	10.1	-	-	-	-	-	-	-	-	-	-	45.3	10.0
41.2	22.2	4.3	25.0	25.0	25.0	25.0	25.0	21.8	17.5	14.5	12.2	-	-	-	-	-	-	-	-	-	-	-	-	40.9	12.0
36.6	22.7	4.0	25.0	25.0	25.0	25.0	25.0	22.3	18.1	15.0	-	-	-	-	-	-	-	-	-	-	-	-	-	36.4	14.4
32.0	23.0	3.7	25.0	25.0	25.0	25.0	25.0	22.9	18.6	-	-	-	-	-	-	-	-	-	-	-	-	-	-	32.0	17.3

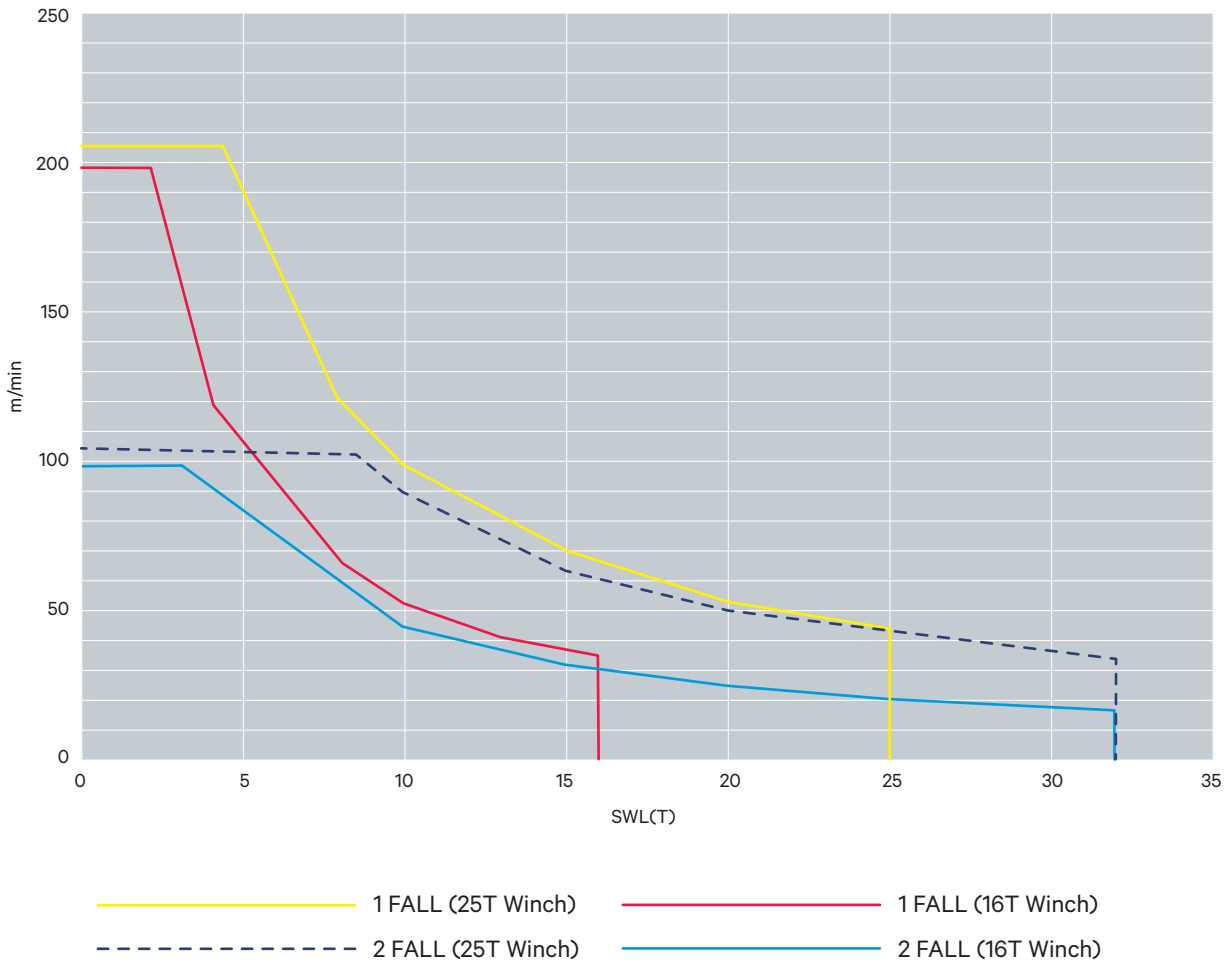
Boom Length (m)	Max Rad. for Max WLL (m)	Min Rad. (m)	WLL at Min Rad. (T)	2 FALL																				Max Rad. (m)	WLL at Max Rad. (T)
				Radius (metres) & Capacity (tonnes)																					
				7.5	10.0	15.0	20.0	25.0	30.0	35.0	40.0	42.5	45.0	47.5	50.0	52.5	55.0	57.5	60.0	62.5	65.0	67.5	70.0		
73.4	-	6.6	15.0	15.0	14.9	14.0	12.5	11.3	10.2	9.3	8.5	7.9	7.1	6.4	5.8	5.2	4.7	4.3	3.8	3.5	3.1	2.8	2.6	71.8	2.4
68.8	-	6.3	23.0	22.4	21.1	19.3	17.2	15.6	14.2	11.4	9.2	8.3	7.5	6.8	6.2	5.6	5.1	4.7	4.3	3.9	3.6	-	-	67.4	3.3
64.2	-	6.0	27.0	26.7	25.6	23.4	21.1	18.9	14.9	12.0	9.8	8.9	8.1	7.4	6.7	6.2	5.7	5.2	4.8	4.5	-	-	-	62.9	4.4
59.6	8.4	5.6	32.0	32.0	31.1	28.3	25.7	19.5	15.4	12.4	10.2	9.3	8.5	7.8	7.2	6.6	6.1	5.7	-	-	-	-	-	58.5	5.5
55.0	17.0	5.3	32.0	32.0	32.0	26.4	20.1	16.0	13.0	10.8	9.9	9.1	8.4	7.7	7.2	-	-	-	-	-	-	-	-	54.1	6.9
50.4	17.3	5.0	32.0	32.0	32.0	27.0	20.7	16.5	13.5	11.2	10.3	9.5	8.8	-	-	-	-	-	-	-	-	-	-	49.6	8.3
45.8	17.6	4.7	32.0	32.0	32.0	27.7	21.3	17.0	14.0	11.8	10.9	10.1	-	-	-	-	-	-	-	-	-	-	-	45.2	10.0
41.2	17.9	4.4	32.0	32.0	32.0	28.3	21.8	17.5	14.5	12.2	-	-	-	-	-	-	-	-	-	-	-	-	-	40.7	12.0
36.6	18.2	4.0	32.0	32.0	32.0	28.9	22.3	18.1	15.0	-	-	-	-	-	-	-	-	-	-	-	-	-	-	36.3	14.4
32.0	18.6	3.7	32.0	32.0	32.0	29.5	22.9	18.6	-	-	-	-	-	-	-	-	-	-	-	-	-	-	-	31.8	17.3



Due to continuing product development Favelle Favco reserves the right to alter specifications of its products as appropriate.

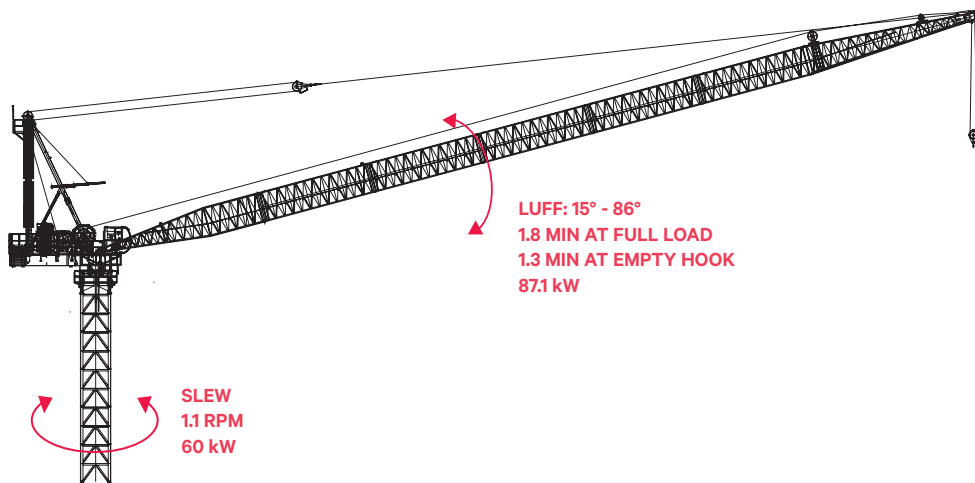
# M390D SPEEDS (METRIC UNITS)

## HOIST SPEED



	LOAD (T)	SPEED (m/min)
1 FALL (25T Winch)	4.3	203.7
	8.0	120.3
	10.0	98.4
	15.0	67.7
	20.0	51.5
	25.0	41.6
1 FALL (16T Winch)	2.1	196.5
	4.0	117.1
	8.0	63.9
	10.0	52.1
	13.0	40.7
2 FALL (25T Winch)	8.5	101.8
	10.0	89.1
	15.0	62.9
	20.0	48.6
	25.0	39.6
	32.0	31.5
2 FALL (16T Winch)	3.2	98.3
	10.0	44.4
	15.0	31.7
	20.0	24.7
	25.0	20.2
	32.0	16.4

## LUFF & SLEW SPEEDS

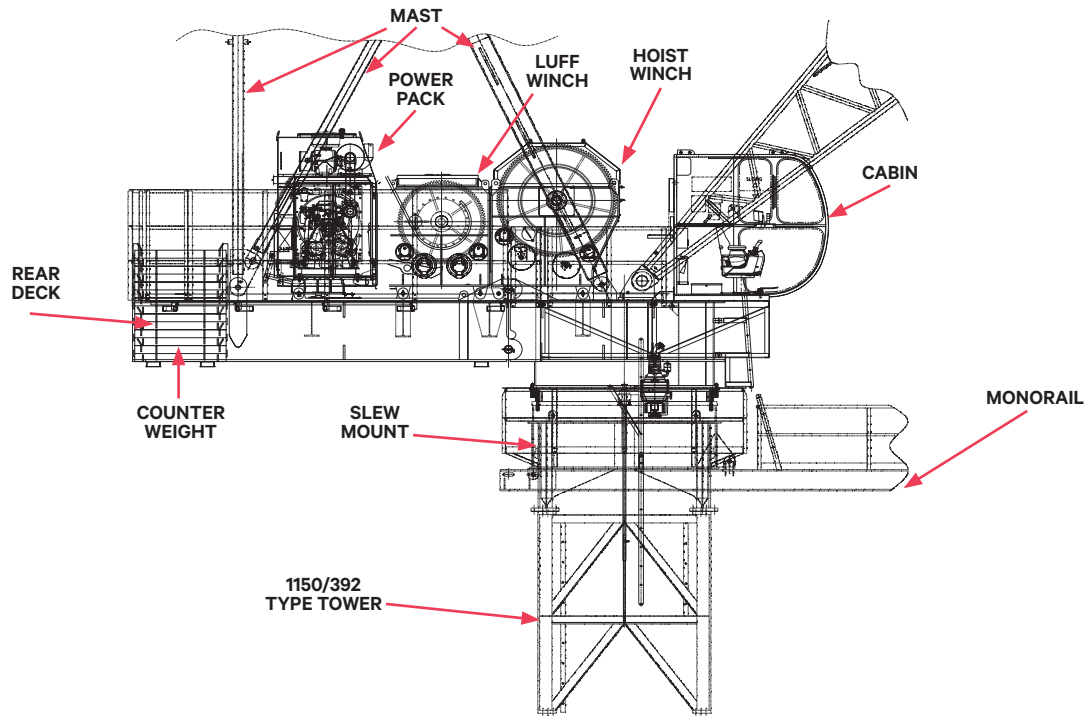




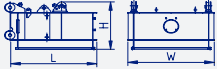
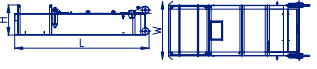
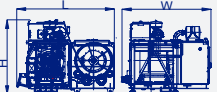
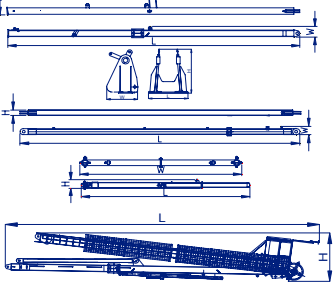







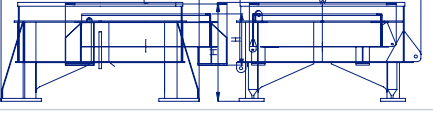




# M390D GENERAL DIMENSIONS

## MACHINERY DECK ASSEMBLY

### M390D



# M390D TRANSPORTATION & ERECTION (Indicative for information only\*)

ITEM	QTY	DESCRIPTION		LENGTH L (mm)	HEIGHT H (mm)	WIDTH W (mm)	WEIGHT PER ITEM (kg)
1	1	SPLIT DECK-FRONT & SLEW DRIVES (INC. PLATFORMS, PINS & HANDRAILS)		3081	1335	2940	6030 (7497)
2	1	SPLIT DECK-REAR (INC. PLATFORMS & HANDRAILS)		5670	1246	2940	6237 (7134)
3	1	POWERPACK AND LUFF WINCH (INC. OIL 900KG)		3222	2580	3260	7696
4	2	MAST FRONT LEG		11172	305	308	2225EA
	1	MAST HEAD		1070	1089	839	766
	2	MAST BACK LEG		10193	162	288	758EA
	1	BUFFER		4446	240	2624	552
	1	MAST ASSEMBLY (INC. SHEAVES, HEAD PIN, LADDERS,BUFFER AND PLATFORMS)		11305	2300	3520	7247
5	1	CABIN & PLATFORM ASSEMBLY		4086	3138	1660	1298
6	1	MAIN HOIST WINCH ASSY (EMPTY DRUM) (600m ROPE CAPACITY)		1910	2418	1712	8112
7	1	BOOM BOTTOM 13.7m (INC. WALKWAY & PINS)		13956	2436	2436	2503
8	1	BOOM TOP 13.7m (INC. DEFLECTOR, SHEAVES & PINS) (PENDANT & PLATFORM)		14295	3480	2436	1906
9	5	BOOM EXTENSION 4.6m		4716	2436	2410	752
10	5	BOOM EXTENSION 9.2m (BRIDLE PLATFORM 307KG)		9316	2410	2410	1385 (1760)
11	1	BRIDLE		1680	1165	1165	811
12	1	SLEW MOUNT (INC. PLATFORMS 556Kg)		2795	1165	1165	4543
	1	SLEW RING (INC. BOLTS)		2627 DIA	184		2443
		Total					7556
13	1	CLIMBER		14343	4435	4435	15912
14	1	MONORAIL		7430	1271	600	1768
15	7	COUNTERWEIGHT		2390	1680	1300	6051
16	1	HOOK - 2/1 FALL (32/16T)		1854	352	830	1125
17	1	TOWER SECTION 1150 (INC.LADDER,HAND RAIL,PLATFORM)		2464	3050	264	3415
18	1	TOWER SECTION 392 (INC.LADDER,HAND RAIL,PLATFORM)		2411	4000	2411	5135
19	1	HOIST ROPE (32mm) @ 4.95kg/m		600m			3089
20	1	LUFF ROPE (32mm) @ 4.87kg/m		200m			1013
21	1	PENDANT ROPE (42mm) @ 2.30kg/m		108m			258

\*WEIGHTS CAN VARY BY INDIVIDUAL CRANE. PLEASE CONTACT US FOR FURTHER INFORMATION.

Due to continuing product development Favelle Favco reserves the right to alter specifications of its products as appropriate.