

MARR

A large white and red tower crane is shown in the process of lifting a long, rectangular concrete beam. The crane's lattice boom extends diagonally across the frame. The beam is suspended by several orange lifting cables. In the background, there are several large black cylindrical tanks and a building under construction with a rebar-reinforced concrete slab. The sky is blue with some light clouds.

SPECIALIST SOLUTIONS FOR MAJOR INFRASTRUCTURE PROJECTS

MARR CONTRACTING
ARE WORLD LEADERS
IN THE DESIGN AND
DELIVERY OF HEAVY LIFT
CRANES AND COMPLEX
CRANAGE SOLUTIONS.

Not just a crew and cranes for hire, we're big thinkers and problem solvers who love a challenge with a string of 'world firsts' to our name – including the design of the world's largest capacity tower crane, the 330-tonne capacity M2480D heavy lift luffing (HLL) crane.

PROJECT 1915ÇANAKKALE BRIDGE, TURKEY
CLIENT DL E&C-LIMAK-SK ECOPLANT-YAPI MERKEZI
JOINT VENTURE (DLSY JV)



OUR UNIQUE APPROACH

DELIVERING VALUE THROUGH THE UNIQUE COMBINATION OF OUR KNOWLEDGE, EXPERIENCE, PROVEN SERVICE DELIVERY AND PEOPLE, WE WORK WITH YOU TO FIND AN ENGINEERING SOLUTION THAT WORKS – NO MATTER HOW BIG OR COMPLEX THE JOB IS.

Through early engagement we can work with you to develop innovative solutions that are specific to your project and deliver the best outcome for your preferred construction methodology.

And with a belief that anything is possible, we push the boundaries to deliver solutions that:

- de-risk construction
- reduce complexity, time & cost
- improve safety.



THE KEY TO ACHIEVING MAXIMUM EFFICIENCY IS EARLY ENGAGEMENT WITH US – AND THE EARLIER THE BETTER.



**SIMON MARR, MANAGING DIRECTOR,
MARR CONTRACTING**



SPECIALIST SOLUTIONS FOR MAJOR INFRASTRUCTURE PROJECTS

OUR UNIQUE APPROACH TO CRANAGE SOLUTIONS FOR MAJOR INFRASTRUCTURE AND LARGE-SCALE CONSTRUCTION PROJECTS COVERS:

- Major transport infrastructure including bridges & railway stations
- Oil & gas
- High-rise construction
- Waste-to-energy & major power plants
- Stadia construction
- Data centre and semi-conductor factory construction.

LEVERAGING THE BENEFITS OF MARR'S CRANES ON A PROJECT CAN FACILITATE SIGNIFICANT IMPROVEMENTS TO PROGRAM TIME, COST AND SAFETY PERFORMANCE BY:

- Providing the capability to lift larger precast and structural steel components
- Increasing the capacity to lift larger and heavier pre-assemblies and modules
- Removing complexity
- Reducing the risk of schedule and cost overrun
- Supporting design for manufacture and assembly (DfMA) construction
- Providing the platform for improved safety, higher quality and 'greener' construction.



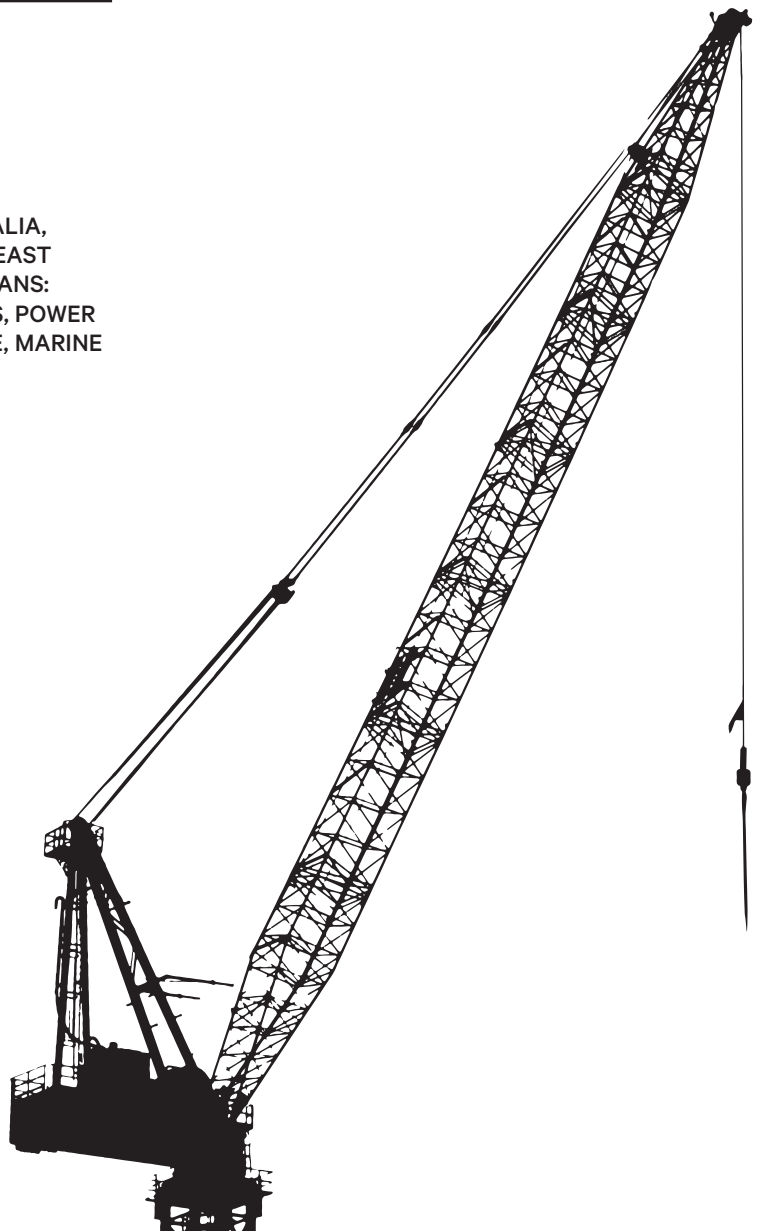
PROJECT NEW SYDNEY FISH MARKETS
CLIENT MULTIPLEX

EXPERTISE

WITH ALMOST 100 YEARS' EXPERIENCE WORKING ON LARGE-SCALE CONSTRUCTION PROJECTS IN AUSTRALIA, THE MIDDLE EAST, EUROPE, LATIN AMERICA, SOUTHEAST ASIA AND THE UNITED KINGDOM, OUR EXPERTISE SPANS: LARGE-SCALE CONSTRUCTION, MINING, OIL AND GAS, POWER GENERATION, MAJOR TRANSPORT INFRASTRUCTURE, MARINE AND TECHNOLOGY.

OUR SERVICES INCLUDE:

- resourced program & project crane solutions
- heavy lift crane solutions & design
- heavy lifting mobile & luffing tower cranes hire
- crane asset management
- recovery crane systems
- complete rigging services with highly qualified & experienced personnel
- engineered lift studies & job site lift planning
- a full range of towers, static & travel bases, internal & external climbing frames, grillages & other accessories.



OUR FLEET

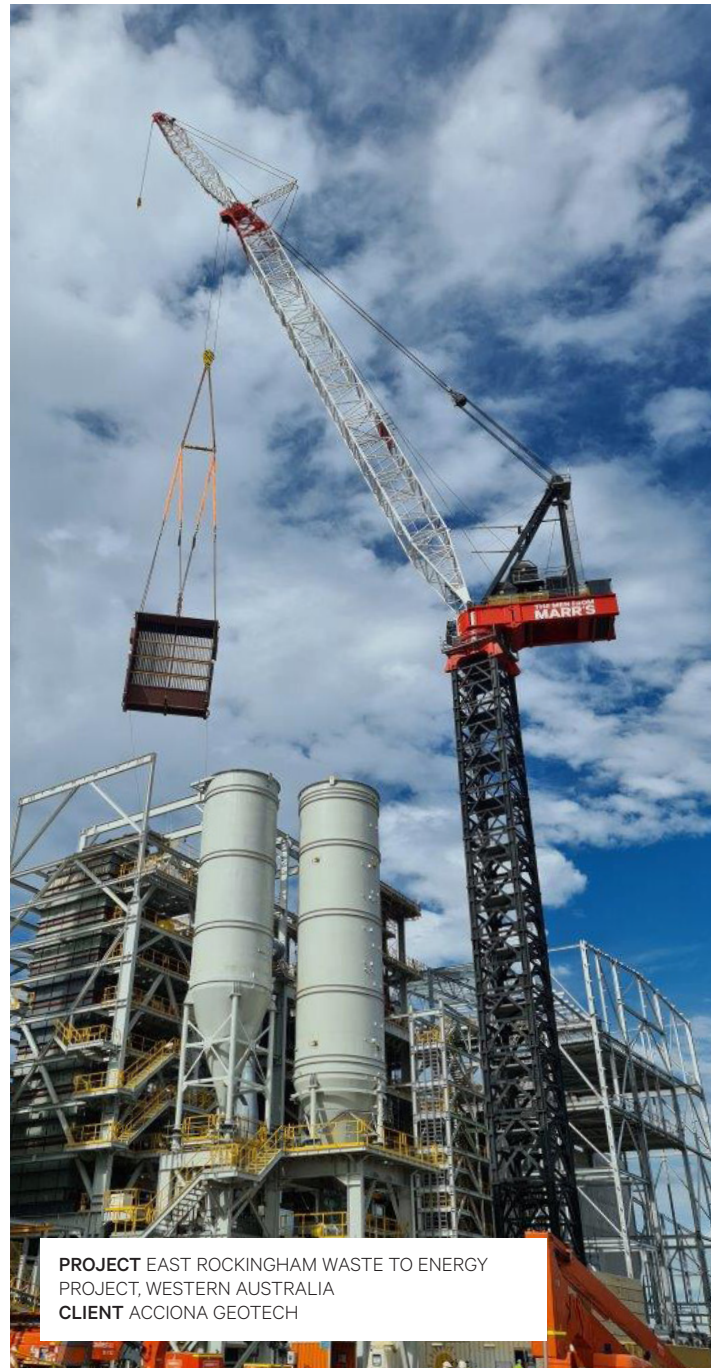
OUR FLEET OF THE WORLD'S LARGEST CAPACITY TOWER CRANES – RANGING FROM THE WORLD'S SMALLEST CRANE, THE TINY M40R, TO THE WORLD'S LARGEST CAPACITY TOWER CRANE, THE M2480D – COMBINES THE LIFTING CAPACITY OF MOBILE AND CRAWLER CRANES WITH THE HIGH PERFORMANCE OF TOWER CRANES.

Our fleet includes mobile and tower cranes for hire on high-rise and general construction jobs, but it is our heavy lifting crane solutions and the way we approach a job that sets us apart.

As part of our commitment to sustainability, all Marr cranes are compatible with renewable diesel (HVO100).

UNIQUE FEATURES & BENEFITS

- High lift capacity – capable of lifting 330T (M2480D) to:
 - enable increased modularisation and installation of larger pre-assembled structures, therefore requiring fewer major lifts
 - decrease temporary works and reduce the need for working at height
 - increase daily tonnage count lifted into a project to drive schedule
- Long reach capability – boom lengths of up to 120m helps to:
 - deliver greater hook availability over a larger area for scheduled and unscheduled lifting
 - reduce congestion with fewer cranes required
 - overcome the impact of delayed plant deliveries by facilitating out of sequence plant installation
 - mitigate the need to relocate cranes, removing the necessity to integrate crane movements into project critical path
- Heavy and high-volume lifting:
 - increases productivity as tower cranes operate quicker than equivalent capacity crawler cranes
 - opens up multiple work fronts using the same crane
- Small base footprint:
 - Frees up valuable laydown areas and transport routes
 - Higher freestanding heights
 - Full climb capability for externally and internally climbed crane
- Ability to operate in higher wind speeds:
 - operational in wind of up to 20 m/s (compared with less than 10m/s for similar capacity crawler and mobile cranes)
 - increased availability helps to significantly improve utilisation and productivity
 - reduced risk to schedule
- Crane removal – recovery crane system to open up the backend of a project and take the crane removal off critical path
- Marr Transit System (MTS) – modular rail system that extends longitudinal reach with no loss of capacity – fully operational between site limits
- HVO100-compatible - up to 90% reduction in CO2 emissions when using 100% renewable diesel.



PROJECT EAST ROCKINGHAM WASTE TO ENERGY PROJECT, WESTERN AUSTRALIA
CLIENT ACCIONA GEOTECH



WE DON'T JUST HIRE
CRANES – WE DESIGN
THEM. SO, IF THE
RIGHT CRANE FOR
YOUR JOB DOESN'T
ALREADY EXIST,
WE'LL BUILD ONE.



**SIMON MARR, MANAGING DIRECTOR,
MARR CONTRACTING**



MARR TRANSIT SYSTEM (MTS)

MTS DESIGN BASIS & PURPOSE

Originally designed to extend the reach and coverage of our fleet*, the Marr Transit System (MTS) helps to reduce congestion and complexity on the work front by reducing the number of cranes required on large projects.

Allowing our cranes to work at full free stand while stationary or to carry a load under pick and carry conditions in line with load chart capacity*, the MTS is available for use with Marr's Heavy Lift Luffer (HLL) and general fleet.

*No restrictions apply to the operation of the crane when on the MTS

APPLICATIONS FOR USE

The MTS is suited to large construction sites including:

- Industrial, mechanical and civil construction works where extensive areas of work need to be covered
- Construction works where heavy lifting and travel is required within a limited space.

Suitable sectoral applications include:

- Power generation – new build, retrofit projects & turnarounds
- Process plants – new build, retrofit projects & turnarounds
- Infrastructure – rail stations, bridges & airports
- Construction – ports, harbours, dams, jetties, data centres & stadia.



REDUCES SITE CONGESTION & COMPLEXITY



EXTENDS THE REACH & COVERAGE OF MARR'S FLEET




IMPROVES SAFETY

MARR CONTRACTING PTY LTD

P +61 (2) 9738 5533 (AUSTRALIA)
M +44 7930 271 791 (UNITED KINGDOM)
E INFO@MARR.COM.AU
MARR.COM.AU

 [marr-contracting](https://www.linkedin.com/company/marr-contracting)

 [@marr_contracting](https://www.instagram.com/marr_contracting)

 vimeo.com/user41811335