

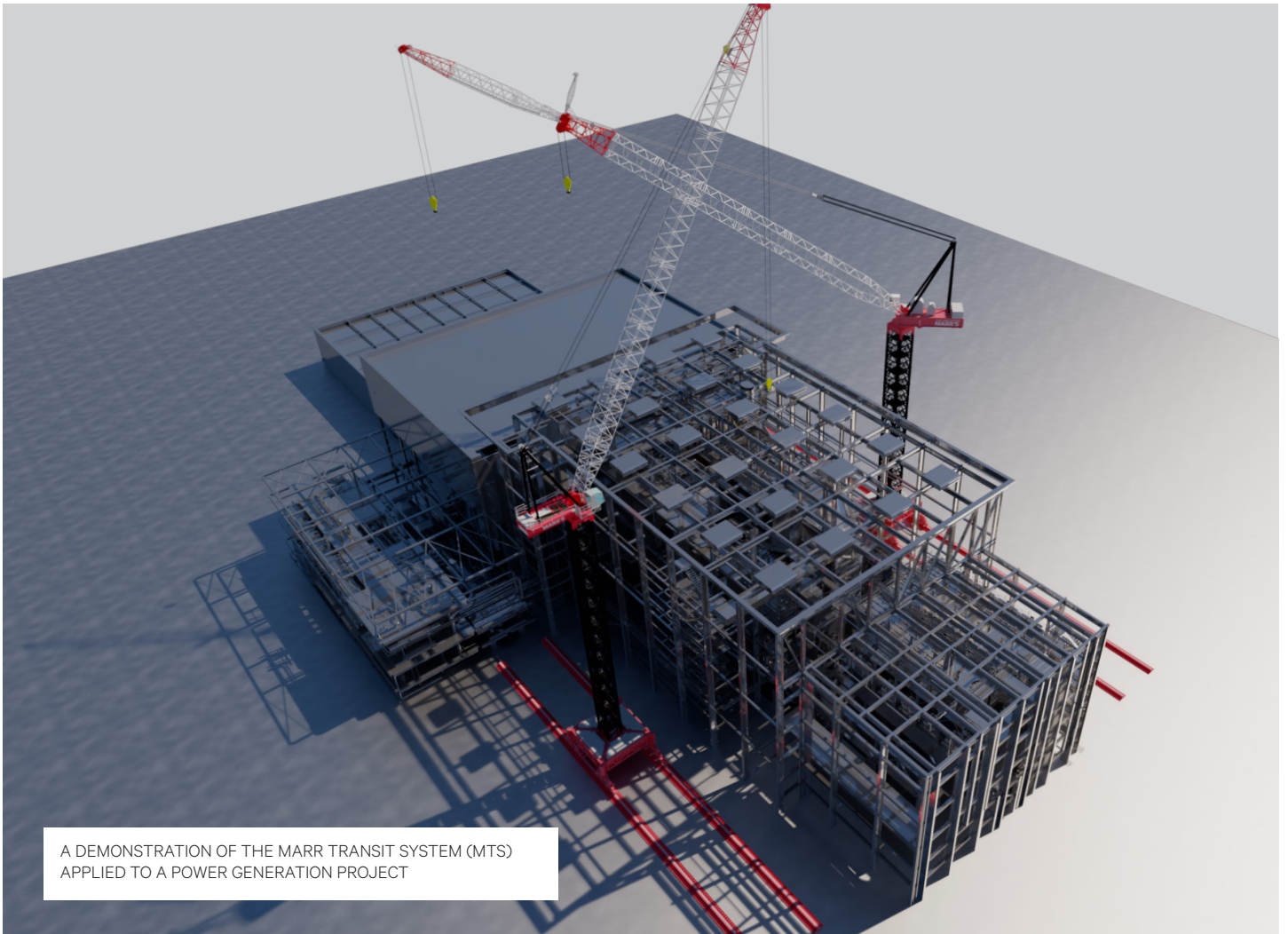
A large industrial crane is lifting a heavy, rectangular component, possibly a transformer or generator part, from the ground. The component is suspended by several thick cables and is being lowered into a complex steel framework of a power plant under construction. The crane is a tall, lattice-structured tower crane with a red base and a white lattice arm. The sky is clear and blue. The overall scene depicts a major engineering project in progress.

# MARR

## SPECIALIST SOLUTIONS FOR THE POWER GENERATION SECTOR

MARR CONTRACTING  
ARE WORLD LEADERS  
IN THE DESIGN AND  
DELIVERY OF HEAVY LIFT  
CRANES AND COMPLEX  
CRANAGE SOLUTIONS.

Not just a crew and cranes for hire, we're big thinkers and problem solvers who love a challenge with a string of 'world firsts' to our name – including the design of the world's largest capacity tower crane, the 330-tonne capacity M2480D heavy lift luffing (HLL) crane.



A DEMONSTRATION OF THE MARR TRANSIT SYSTEM (MTS)  
APPLIED TO A POWER GENERATION PROJECT

# OUR UNIQUE APPROACH

**DELIVERING VALUE THROUGH THE UNIQUE COMBINATION OF OUR KNOWLEDGE, EXPERIENCE, PROVEN SERVICE DELIVERY AND PEOPLE, WE WORK WITH YOU TO FIND AN ENGINEERING SOLUTION THAT WORKS – NO MATTER HOW BIG OR COMPLEX THE JOB IS.**

Through early engagement we can work with you to develop innovative solutions that are specific to your project and deliver the best outcome for your preferred construction methodology.

And with a belief that anything is possible, we push the boundaries to deliver solutions that:

- de-risk construction
- reduce complexity, time & cost
- improve safety.



THE KEY TO ACHIEVING  
MAXIMUM EFFICIENCY  
IS EARLY ENGAGEMENT  
WITH US – AND THE  
EARLIER THE BETTER.



**SIMON MARR, MANAGING DIRECTOR,  
MARR CONTRACTING**



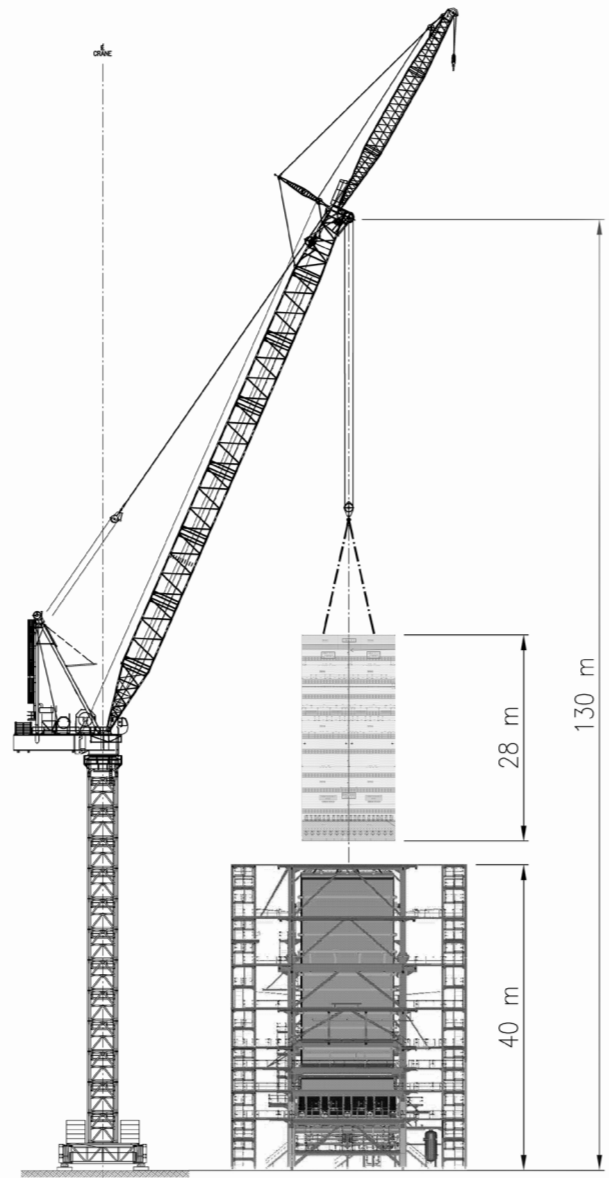
# SPECIALIST SOLUTIONS FOR THE POWER GENERATION SECTOR

OUR INNOVATIVE APPROACH TO CRANAGE SOLUTIONS FOR THE POWER GENERATION AND WASTE-TO-ENERGY (WTE/EFW) SECTOR AIMS TO REDUCE THE NUMBER OF LIFTS REQUIRED, RESULTING IN:

- Fewer cranes
- Accelerated programme to commercialisation
- Lower project costs, and
- Most importantly, the platform for improved safety, higher quality and 'greener' construction.

Scoped to suit the individual plant size and layout of each project, Marr's solutions support Designed for Manufacture & Assembly (DfMA) construction, offering:

- Increased capability to lift in:
  - steam drums as a single component, thus avoiding onsite welding, heat treatment & testing
  - headers complete and boiler tube banks in larger configurations reducing onsite welding & testing
  - turbine components
- Fewer cranes matched with smaller crane footprints releases laydown & onsite construction areas
- Complete site coverage with minimum impact on space
- Increased daily lifting measured in tonnage rather than the number of lifts.



BOILER WALL PANELS INSTALLATION FEASIBILITY DIAGRAM: SHOWING M24-80D WITH 74, MAIN BOOM AND 30M FLY, 120 TONNES AT 32M RADIUS.



**PROJECT EAST ROCKINGHAM ENERGY TO WASTE PROJECT**  
**CLIENT ACCIONA GEOTECH**



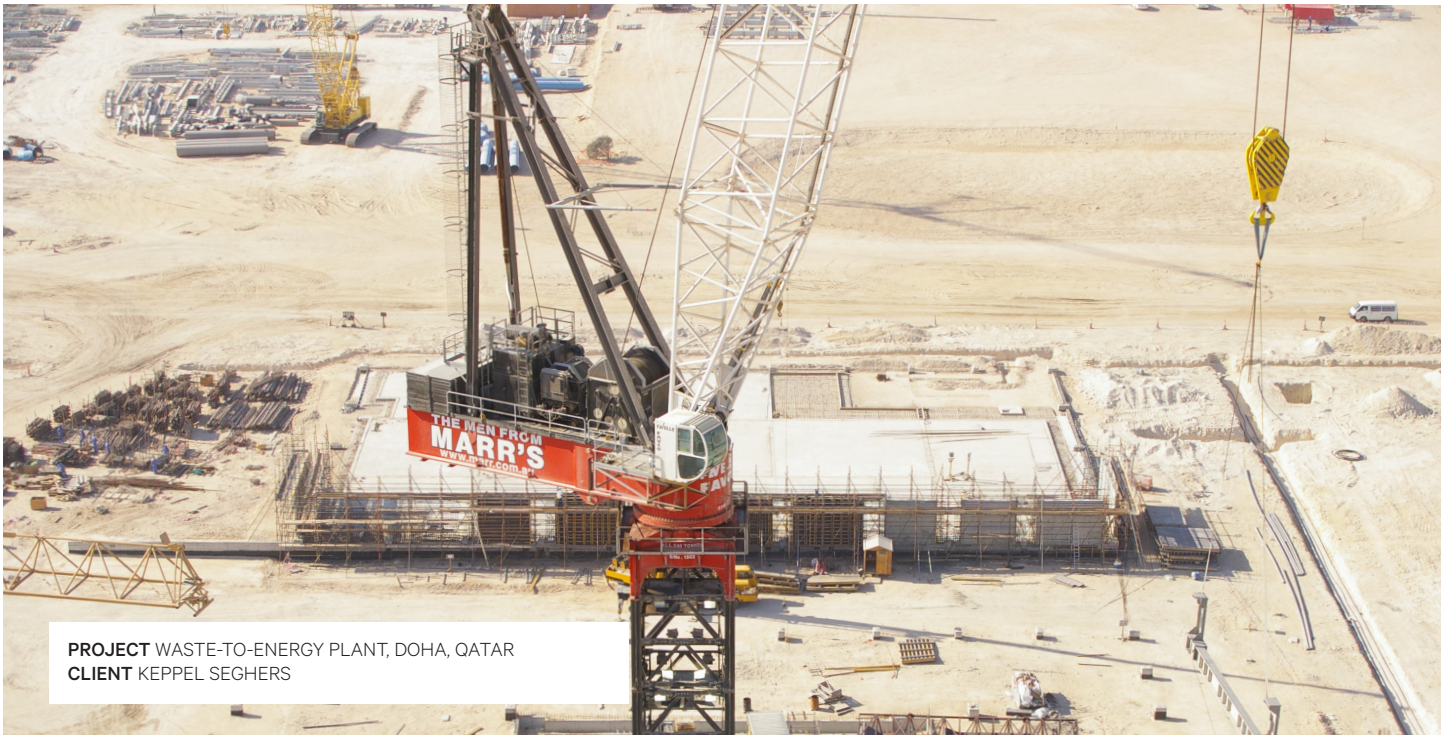
# EXPERTISE

WITH ALMOST 100 YEARS' EXPERIENCE WORKING ON LARGE-SCALE CONSTRUCTION PROJECTS IN AUSTRALIA, THE MIDDLE EAST, EUROPE, LATIN AMERICA, SOUTHEAST ASIA AND THE UNITED KINGDOM, OUR EXPERTISE SPANS: LARGE-SCALE CONSTRUCTION, MINING, OIL AND GAS, POWER GENERATION, MAJOR TRANSPORT INFRASTRUCTURE, MARINE AND TECHNOLOGY.

## OUR SERVICES INCLUDE:

- resourced program & project crane solutions
- heavy lift crane solutions & design
- heavy lifting mobile & luffing tower cranes hire
- crane asset management
- recovery crane systems
- complete rigging services with highly qualified & experienced personnel
- engineered lift studies & job site lift planning
- a full range of towers, static & travel bases, internal & external climbing frames, grillages & other accessories.





**PROJECT** WASTE-TO-ENERGY PLANT, DOHA, QATAR  
**CLIENT** KEPPEL SEGHERS

# OUR FLEET

**OUR FLEET OF THE WORLD'S LARGEST CAPACITY TOWER CRANES – RANGING FROM THE WORLD'S SMALLEST CRANE, THE TINY M40R, TO THE WORLD'S LARGEST CAPACITY TOWER CRANE, THE M2480D – COMBINES THE LIFTING CAPACITY OF MOBILE AND CRAWLER CRANES WITH THE HIGH PERFORMANCE OF TOWER CRANES.**

Our fleet includes mobile and tower cranes for hire on high-rise and general construction jobs, but it is our heavy lifting cranes and the way we approach a job that sets us apart.

## UNIQUE FEATURES & BENEFITS

- High lift capacity – allowing upsized components, increased modularisation & more extensive offsite prefabrication & pre-assembly
- Long reach capability – 120m radius delivering greater hook availability over a larger area for scheduled and unscheduled lifting
- Small base footprint – equivalent to two cars parked side-by-side, freeing up much needed construction space & requiring reduced building stand-off
- Marr Transit System (MTS) – modular rail system that provides full crane capability with minimal ground preparation. Ideally suited to the installation of large footprint buildings, the MTS offers:
  - increased site coverage with minimum impact on space
  - a reduction in the number of cranes required, removing site complexity
  - a crane movement that tracks building progress
- Operational in winds of up to 20m/ second - increased availability in higher wind speeds and weather vane capability in extreme weather eliminates site laydown requirements
- HVO100-compatible - up to 90% reduction in CO<sup>2</sup> emissions when using 100% renewable diesel.






WE DON'T JUST HIRE CRANES – WE DESIGN THEM. SO, IF THE RIGHT CRANE FOR YOUR JOB DOESN'T ALREADY EXIST, WE'LL BUILD ONE.



**SIMON MARR, MANAGING DIRECTOR,  
MARR CONTRACTING**

## MARR CONTRACTING PTY LTD

**P** +61 (2) 9738 5533 (AUSTRALIA)  
**M** +44 7930 271 791 (UNITED KINGDOM)  
**E** [INFO@MARR.COM.AU](mailto:INFO@MARR.COM.AU)  
**MARR.COM.AU**

 [marr-contracting](https://www.linkedin.com/company/marr-contracting)  
 [@marr\\_contracting](https://www.instagram.com/marr_contracting)  
 [vimeo.com/user41811335](https://vimeo.com/user41811335)